

Mammography Education, Inc.

2012

How to Find Breast Cancer when it is still Small

- * Hands-on training in screening
- * *Diagnosis and Differential Diagnosis* using the Multimodality Approach

FLORENCE, Italy

December 4-7, 2012

Grand Hotel Baglioni Firenze

LÁSZLÓ TABÁR, M.D., F.A.C.R (Hon) Course Director

*Professor of Radiology
and*

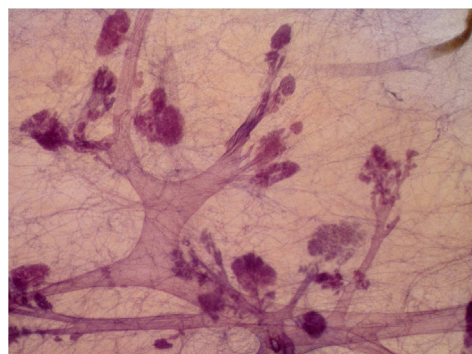
ALFONSO FRIGERIO, M.D.

Designed for:

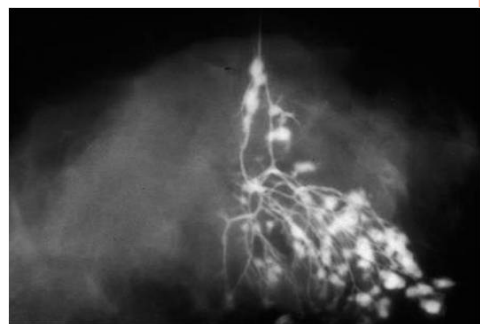
Radiologists

This course provides extensive knowledge about how to find breast cancer in its early stages, about diagnostic breast imaging, differential diagnosis of breast diseases using the multimodality approach

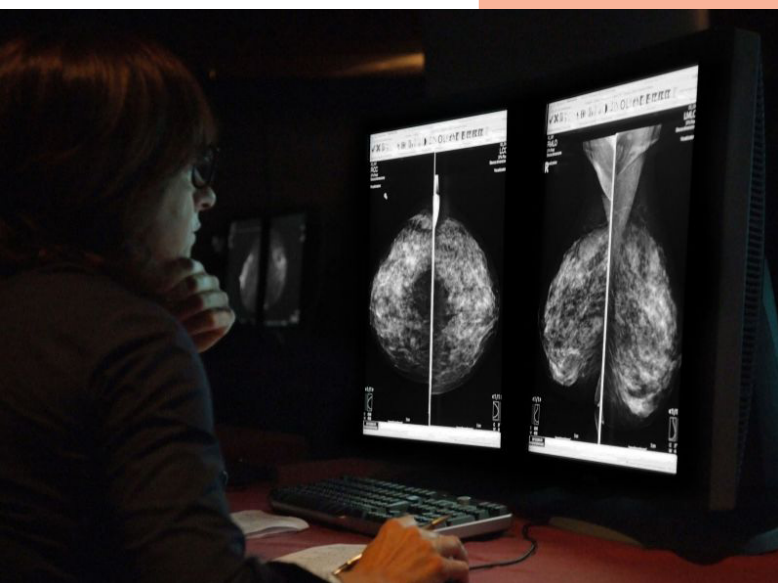
26 hours of Category I CME credits



3D image of the breast tissue



Galactography of a lobe





2012

BREAST SEMINAR SERIES

How to find breast cancer
when it is still small

László Tabár, M.D., F.A.C.R.(Hon)

Professor of Radiology Course Director

Alfonso Frigerio, M.D.

FACULTY



László Tabár, M.D., F.A.C.R. (Hon).

Course Director

*Professor emeritus of Radiology, University of
Uppsala School of Medicine, Sweden
Department of Mammography,
Falun Central Hospital, Falun, Sweden*



Alfonso Frigerio, M.D.

*Regional Reference Center for
Breast Cancer Screening,
CPO-Piemonte,
S. Giovanni Battista Hospital, Torino, Italy*



2012
BREAST SEMINAR SERIES
How to find breast cancer
when it is still small

László Tabár, M.D., F.A.C.R.(Hon)
Professor of Radiology Course Director
Alfonso Frigerio, M.D.



Mammography Education, Inc. is accredited by the Accreditation Council for Continuing Medical Education to sponsor continuing medical education for physicians. Mammography Education, Inc. designed these medical education activities for a maximum of **26 credit hours in Category I** of the Physicians' Recognition Award of the American Medical Association.

Each physician should claim only those hours of credit that he / she actually spent in the educational activity.

This course also applies for the Italian System of CME credits (ECM). Italian physicians may claim only those hours of credit that she/he actually spent in the educational activity. The credits can be claimed through our Italian agent KONICAB (see below)



Italian Scientific Organizing Committee

Dott. Alfonso Frigerio, M.D., Ospedale S. Giovanni Battista, **Torino**, Italy
e-mail: alfonso.frigerio@gmail.com

CREDITS

We would like to thank the sponsors for their support of the teaching seminars of Mammography Education, Inc (list of vendors will be presented at the beginning of the course)

Information on hotel reservations and information for the Italian attendees

Ms. Paola Garuffi, **Konicab Congressi srl** - Bologna, Italy. Phone: (0039) - 051 - 385 328. Fax: (0039) 051-311 350.

COURSE LANGUAGE

English with simultaneous translation to **Italian**.



2012
BREAST SEMINAR SERIES
How to find breast cancer
when it is still small

László Tabár, M.D., F.A.C.R.(Hon)
Professor of Radiology Course Director
Alfonso Frigerio, M.D.

1st DAY

Lectures between 9:00 AM and 12:00 for all attendees

9:00 INTRODUCTION FOLLOWED BY DIDACTIC LECTURES COVERING:

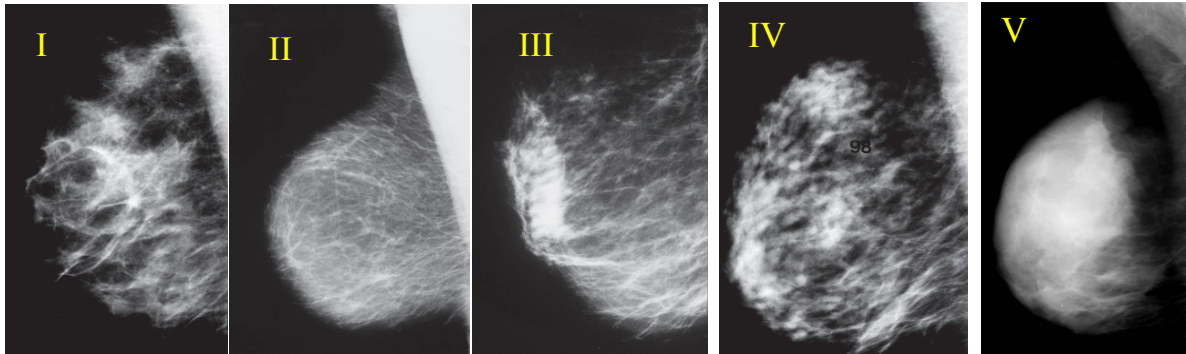
HOW TO READ A MAMMOGRAM? THE BASIS FOR EFFICIENT INTERPRETATION OF THE MAMMOGRAPHIC IMAGE - [Tabar L](#)

- Correlative 3-dimensional, subgross anatomy and mammography of the normal breast

Break at
10:30 AM

MAMMOGRAPHIC PARENCHYMAL PATTERNS

- Practical implication, problems and solutions. Mammographic patterns and the risk of developing breast cancer. Understanding the mammograms of dense breasts.



HOW TO FIND THE INVASIVE BREAST CANCER WHEN IT IS STILL SMALL . SCREENING COMBINED WITH AN ANALYTICAL APPROACH FOR THE DIFFERENTIAL DIAGNOSIS OF STELLATE / SPICULATED LESIONS - [Tabar L](#)

- A systematic method for viewing mammograms.
- Areas on the mammogram where most breast cancers will be found
- Viewing dense breasts
- Viewing relatively easy-to-read breasts

12:00 Lunch



2012
BREAST SEMINAR SERIES
How to find breast cancer
when it is still small

László Tabár, M.D., F.A.C.R.(Hon)
Professor of Radiology Course Director
Alfonso Frigerio, M.D.

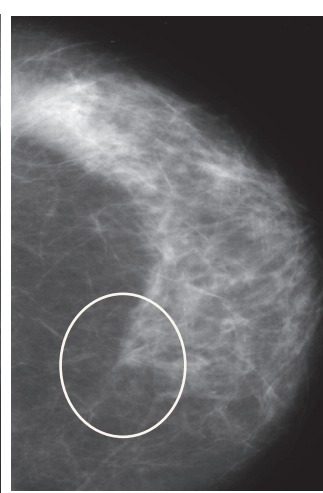
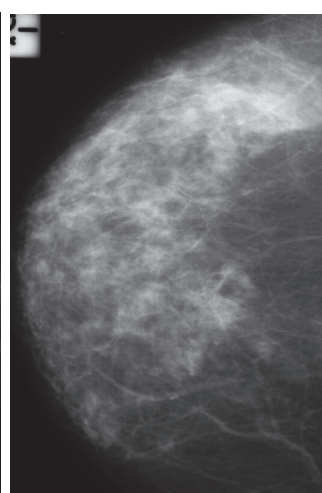
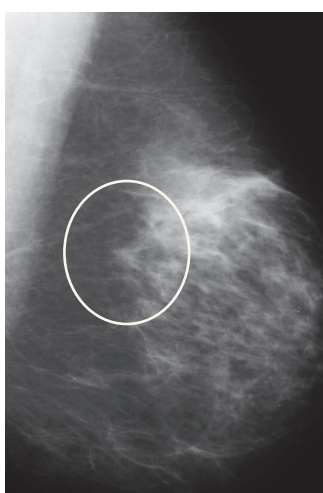
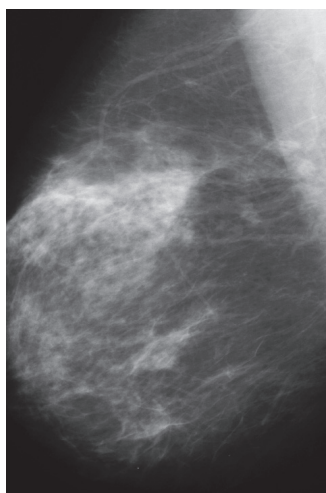
1st DAY

Hands-on screening and didactic lecture series 1:00 PM - 5:00 PM

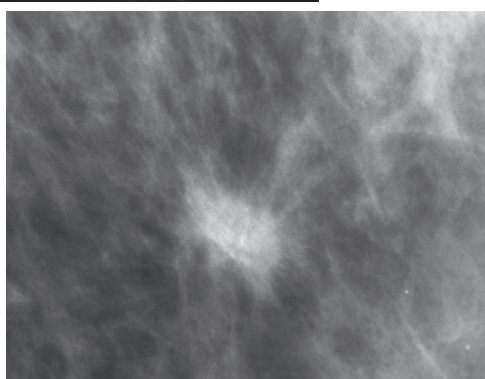
1:00 - 2:15 GROUP 1 HANDS ON SCREENING - Frigerio, A.

1:00 - 2:15 GROUP 2: ASYMMETRIC DENSITY WITH ARCHITECTURAL DISTORTION.

Faculty-audience interaction - [Tabar L](#)



**Breaks at 2:15 and
3:45 PM**



Hands-on training in screening



2:30 - 3:45 GROUP 2 HANDS ON SCREENING - Frigerio, A.

2:30 - 3:45 GROUP 1: ASYMMETRIC DENSITY WITH ARCHITECTURAL DISTORTION
Faculty-audience interaction - [Tabar L](#)

**4:00 - 5:00 GROUPS 1& 2: DISCUSSION OF THE SCREENING CASES AND LECTURES OF THE
AFTERNOON SESSION**

5:00 PM End of Day 1



2012
BREAST SEMINAR SERIES
How to find breast cancer
when it is still small

László Tabár, M.D., F.A.C.R.(Hon)
Professor of Radiology Course Director
Alfonso Frigerio, M.D.

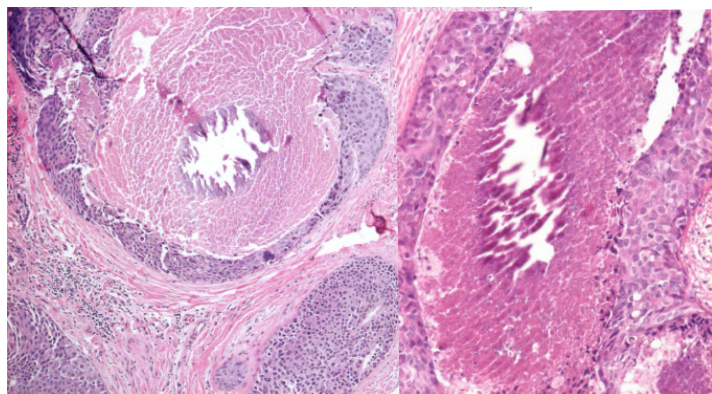
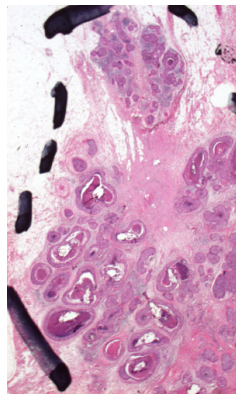
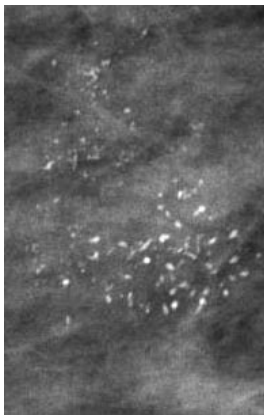
2nd DAY

Hands-on screening and didactic lecture series 8:30 - 12:15

8:30 - 9:45 **GROUP 1** HANDS ON SCREENING - [Frigerio, A.](#)

8:30 - 9:45 **GROUP 2:** DIDACTIC LECTURE SERIES COVERING THE FOLLOWING TOPICS:

SCHEME FOR THE ANALYSIS OF MAMMOGRAPHIC CALCIFICATIONS. PART I - [Tabar L](#)



**Breaks at
9:45 and 11:00 AM**

Mammographic-histologic correlation of crushed stone-like calcifications

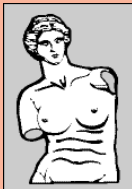
10:00 - 11:00 **GROUP 2** HANDS ON SCREENING - [Frigerio, A.](#)

10:00 - 11:00 **GROUP 1:** DIDACTIC LECTURE SERIES COVERING THE FOLLOWING TOPICS:

SCHEME FOR THE ANALYSIS OF MAMMOGRAPHIC CALCIFICATIONS. PART I - [Tabar L](#)

11:15 - 12:15 **GROUPS 1& 2:** DISCUSSION OF THE SCREENING CASES AND LECTURES OF
THE MORNING SESSION

Lunch 12:15 PM - 1:30 PM



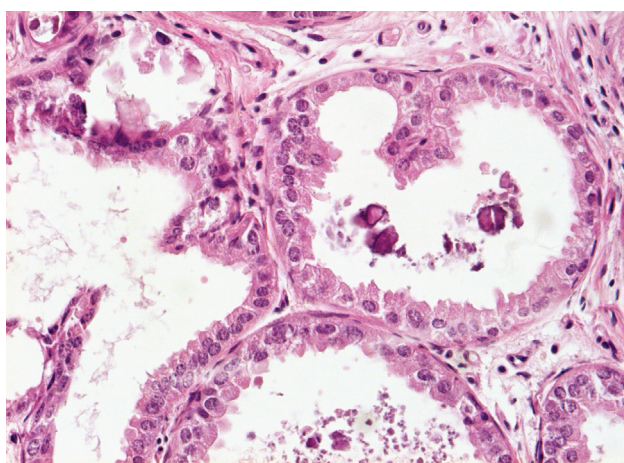
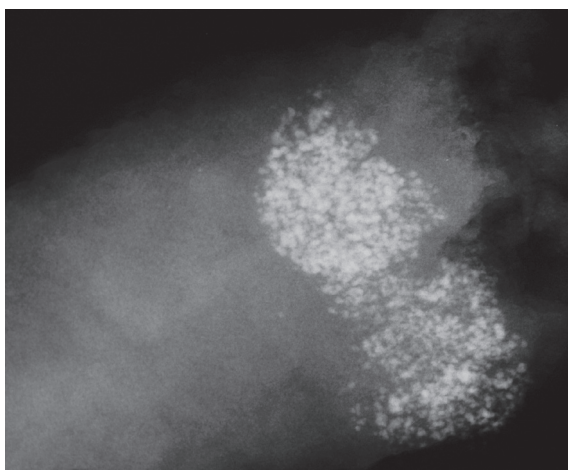
2012
BREAST SEMINAR SERIES
How to find breast cancer
when it is still small

László Tabár, M.D., F.A.C.R.(Hon)
Professor of Radiology Course Director
Alfonso Frigerio, M.D.

2nd DAY Hands-on screening and didactic lecture series 1:30 - 5:00 PM

1:30 - 2:30 **GROUP 1** HANDS ON SCREENING - [Frigerio, A.](#)

1:30 - 2:30 **GROUP 2:** DIDACTIC LECTURE SERIES COVERING THE FOLLOWING TOPICS:
SCHEME FOR THE ANALYSIS OF MAMMOGRAPHIC CALCIFICATIONS PART I I - [Tabar L](#)



Mammographic-histologic correlation of powdery/cotton ball-like calcifications

Breaks at 2:30 and 3:45 PM

2:45 - 3:45 **GROUP 2** HANDS ON SCREENING - [Frigerio, A.](#)

2:45 - 3:45 **GROUP 1:** DIDACTIC LECTURE SERIES COVERING THE FOLLOWING TOPICS:
SCHEME FOR THE ANALYSIS OF MAMMOGRAPHIC CALCIFICATIONS PART II - [Tabar L](#)

4:00 - 5:00 **GROUPS 1& 2:** DISCUSSION OF THE SCREENING CASES AND LECTURES OF
THE AFTERNOON SESSION

5:00 PM End of Day 2



2012
BREAST SEMINAR SERIES
How to find breast cancer
when it is still small

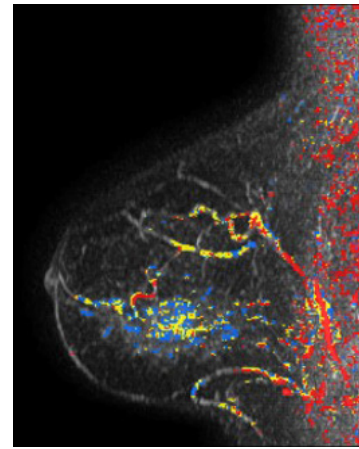
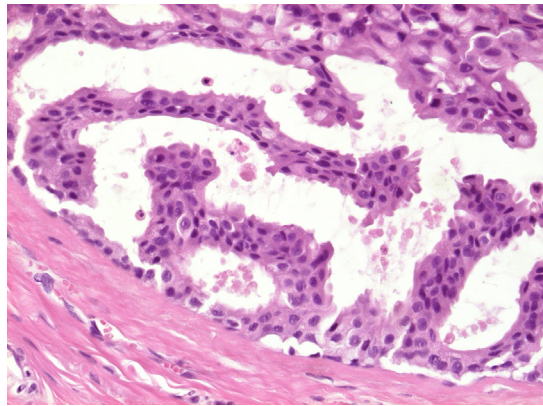
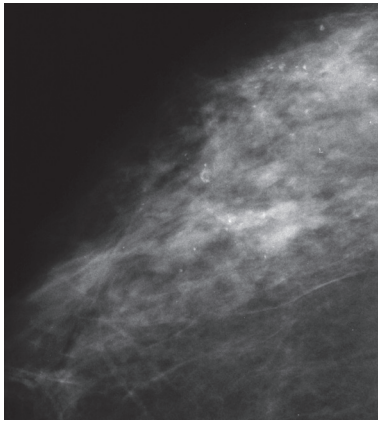
László Tabár, M.D., F.A.C.R.(Hon)
Professor of Radiology Course Director
Alfonso Frigerio, M.D.

3rd DAY Hands-on screening and lectures between 8:30 AM and 12:00

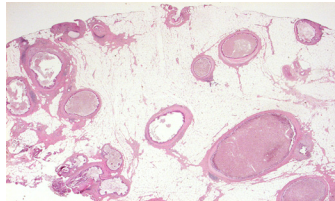
8:30 - 9:45 GROUP 1 HANDS ON SCREENING - [Frigerio, A.](#)

8:30 - 9:45 GROUP 2: DIDACTIC LECTURE SERIES COVERING THE FOLLOWING TOPICS:

SCHEME FOR THE ANALYSIS OF MAMMOGRAPHIC CALCIFICATIONS. PART III - [Tabar L](#)



Breaks at
9:45 and 11:00 AM



Imaging-histologic correlation of
skipping stone-like calcifications

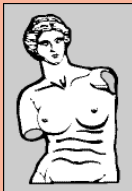
10:00 - 11:00 GROUP 2 HANDS ON SCREENING - [Frigerio, A.](#)

10:00 - 11:00 GROUP 1: DIDACTIC LECTURE SERIES COVERING THE FOLLOWING TOPICS:

SCHEME FOR THE ANALYSIS OF MAMMOGRAPHIC CALCIFICATIONS. PART III - [Tabar L](#)

11:15 - 12:15 GROUPS 1& 2: DISCUSSION OF THE SCREENING CASES AND LECTURES OF
THE MORNING SESSION

Lunch 12:15 PM - 1:30 PM



2012
BREAST SEMINAR SERIES
How to find breast cancer
when it is still small

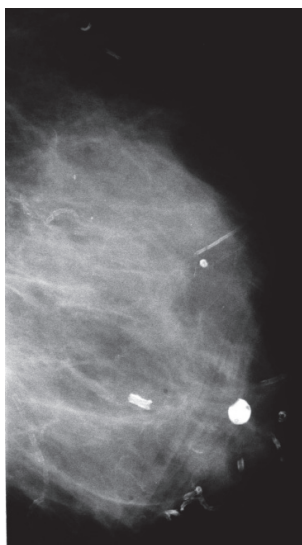
László Tabár, M.D., F.A.C.R.(Hon)
Professor of Radiology Course Director
Alfonso Frigerio, M.D.

3rd DAY Lectures between 1:30 AM and 4:00 PM for all attendees

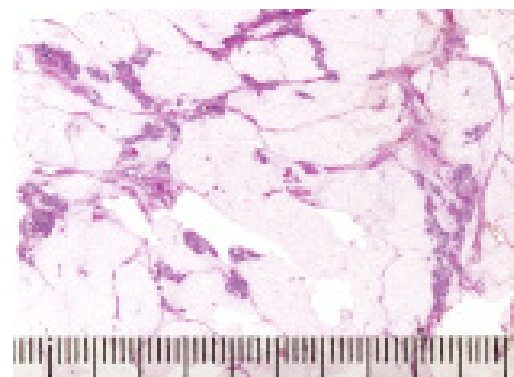
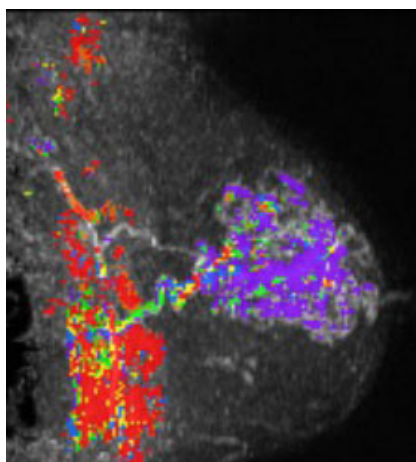
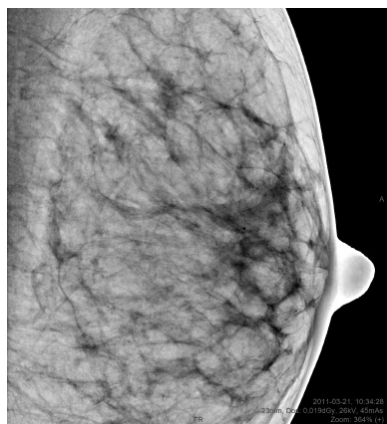
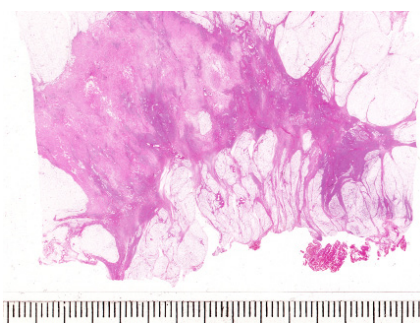
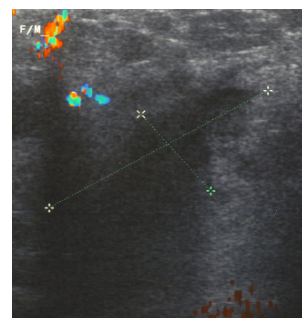
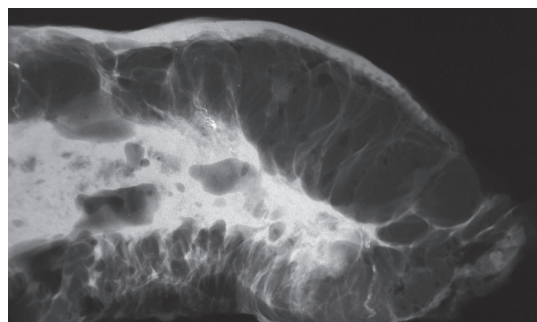
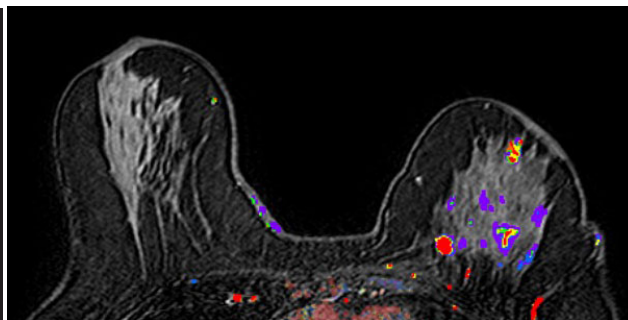
1:30 - 4:00 GROUP 1 & 2: DIDACTIC LECTURE SERIES COVERING THE FOLLOWING TOPICS:

DEMONSTRATION AND DISCUSSION OF "COMPLEX CASES".

Faculty-audience interaction - [Tabar L](#)



Multimodality workup
of a huge invasive
lobular carcinoma



Subtle mammography finding / MRI shows that the entire lobe is filled with a diffuse breast cancer,
confirmed at histology

4:15 ART HISTORY LECTURE: LEONARDO, MICHELANGELO AND RAPHAEL three giants collide
- [A FRIGERIO](#)



2012
BREAST SEMINAR SERIES
How to find breast cancer
when it is still small

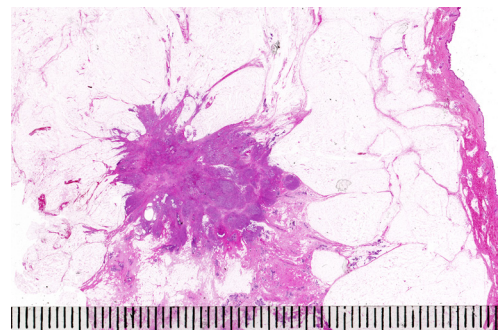
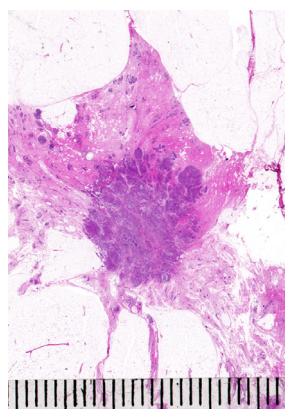
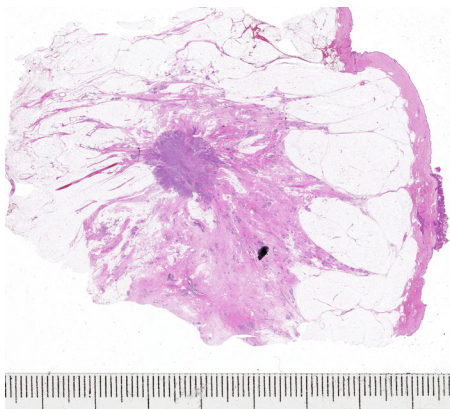
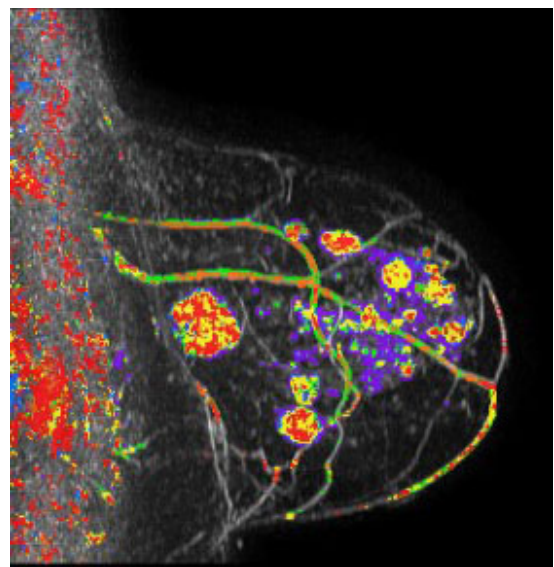
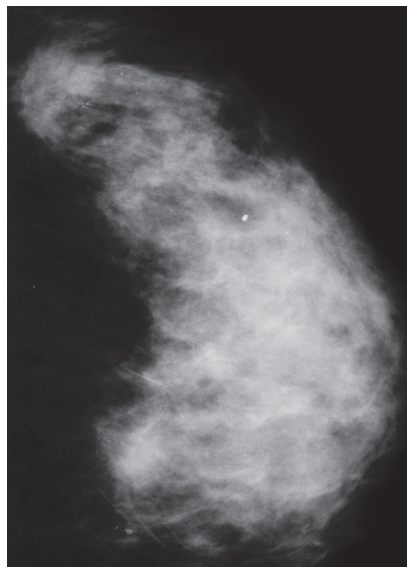
László Tabár, M.D., F.A.C.R.(Hon)
Professor of Radiology Course Director
Alfonso Frigerio, M.D.

4th DAY Hands-on screening and lectures between 8:00 AM and 12:00

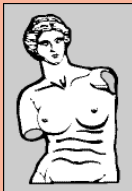
8:00 - 9:15 GROUP 1 HANDS ON SCREENING - Frigerio, A.

8:00 - 9:15 GROUP 2: DIDACTIC LECTURE SERIES COVERING THE FOLLOWING TOPICS:
MULTIMODALITY WORKUP OF ASYMMETRIC DENSITIES ON THE MAMMOGRAM - [Tabar L](#)

**Breaks at
9:15 and 10:45 AM**



Imaging-histologic correlation of a multifocal cancer case



2012
BREAST SEMINAR SERIES
How to find breast cancer
when it is still small

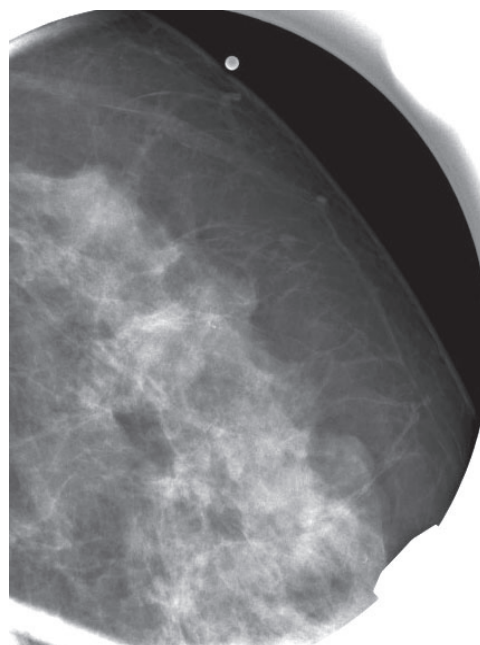
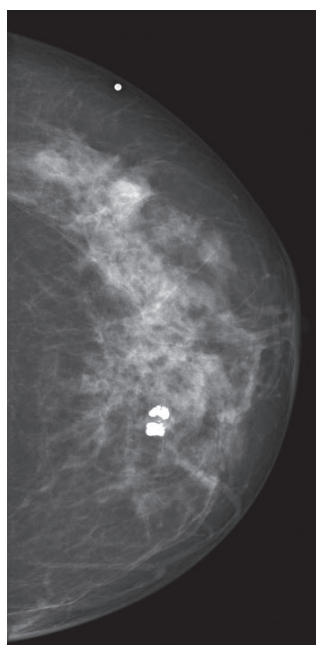
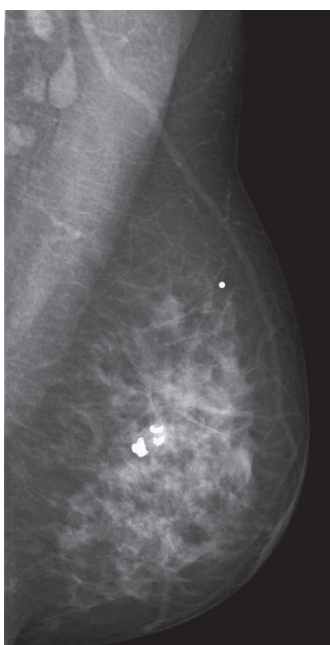
László Tabár, M.D., F.A.C.R.(Hon)
Professor of Radiology Course Director
Alfonso Frigerio, M.D.

4th DAY Hands-on screening and lectures between 8:00 AM and 12:00

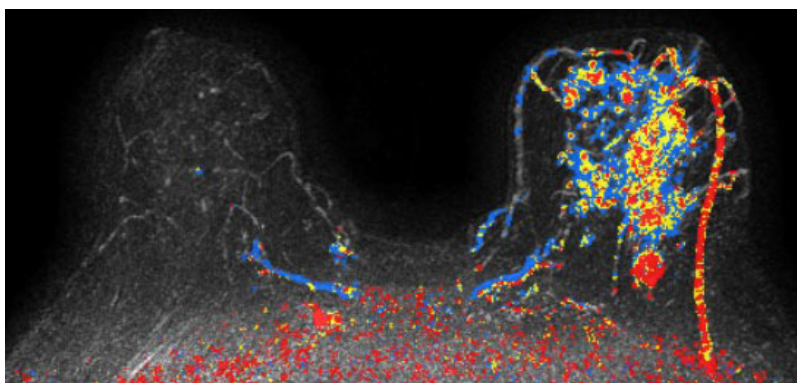
9:30 - 10:45 GROUP 2 HANDS ON SCREENING - [Frigerio, A.](#)

9:30 - 10:45 GROUP 1: DIDACTIC LECTURE SERIES COVERING THE FOLLOWING TOPICS:

MULTIMODALITY WORKUP OF ASYMMETRIC DENSITIES ON THE MAMMOGRAM - [Tabar L](#)



**Breaks at
9:15 and 10:45 AM**



Imaging-histologic correlation of a diffuse cancer case

11:00 - 12:00 GROUPS 1 & 2: DISCUSSION OF THE SCREENING CASES AND LECTURES OF
THE MORNING SESSION

DISCUSSION. 12:00 End of course



2012
BREAST SEMINAR SERIES
How to find breast cancer
when it is still small

László Tabár, M.D., F.A.C.R.(Hon)
Professor of Radiology Course Director
Alfonso Frigerio, M.D.

**For more information and
registration please contact:**

**Mammography Education, Inc.
4429 E. Spur Drive
CAVE CREEK, AZ 85331, USA**

Phone: (480) 419 0227

Fax: (480) 419 0219

e-mail: info@mammographyed.com

Internet: www@mammographyed.com



Hands-on training in screening

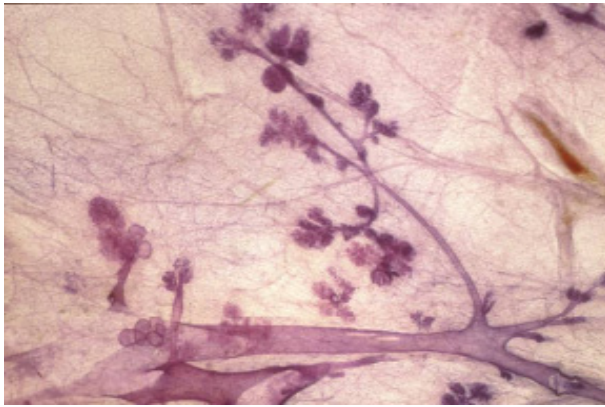
THE SCHEDULE IS SUBJECT TO CHANGE WITHOUT NOTICE AND
DOES NOT REPRESENT A COMMITMENT ON THE PART OF THE ORGANIZERS
ALL RIGHTS RESERVED INCLUDING THE RIGHT OF REPRODUCTION
IN WHOLE OR IN PART OF ANY FORM

COPYRIGHT ©

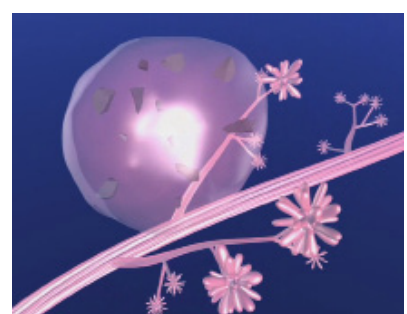
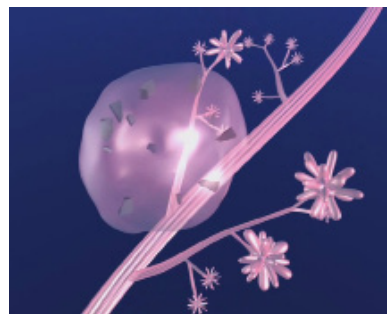
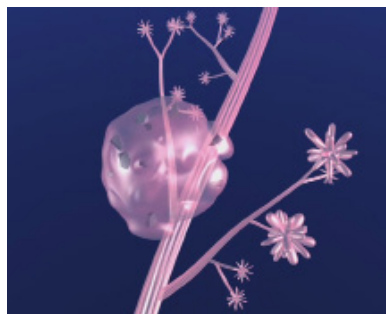
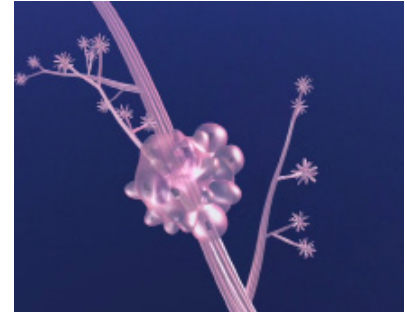
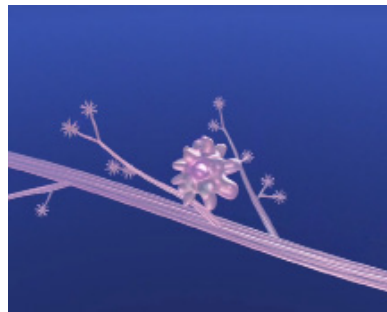


2012
BREAST SEMINAR SERIES
How to find breast cancer
when it is still small

László Tabár, M.D., F.A.C.R.(Hon)
Professor of Radiology Course Director
Alfonso Frigerio, M.D.



3-D histologic image of TDLUs



Computer simulation images of the development of Grade 2 *in situ* carcinoma within the TDLU. The lobule becomes gradually distended and deformed. Calcifications are formed within the necrotic debris and are seen on the mammogram as **crushed stone-like calcifications**.